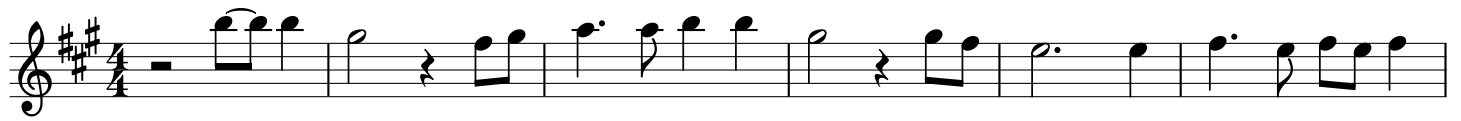
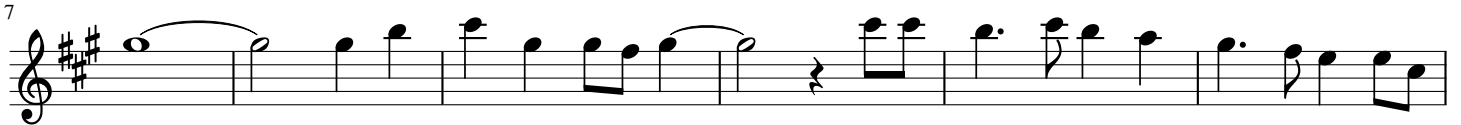


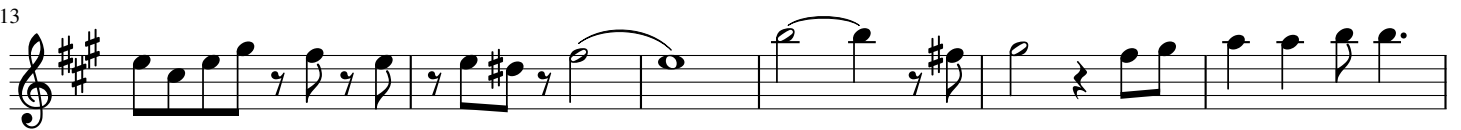
Si e luma



Si-e-lu - ma, - ka-na - shaj - dik has - a - ba - nastig - zhal - maj - dúr, - duk hal-a-ba



a Ke-ma - nu - sha me - ren trubul vast te xu - tyi - la - s keko-



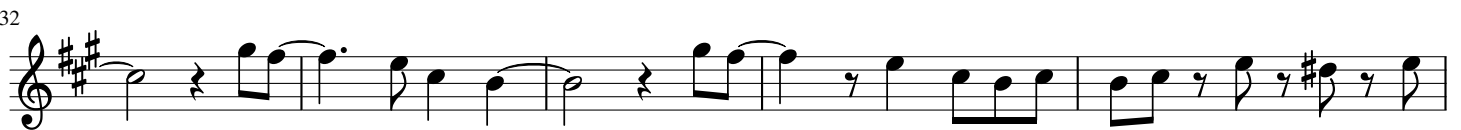
doj-a-ma ro - ba - ro de-li - pé - é Sie - lu - ma, lerom an - de jek tor -



gyon la lu - make tru - bul teush-tya - rel - Ke-ma - nu-sha me - ren trubul



vast te xu - tyi - la - s keko - doj-a-ma ro - ba - ro de-li - pé - Si-e luma



Si-le sha-vo - ra Ke-a - me shajke-ras maj shu - kar la - shi



de - te - ha - ra A-me shaj-la - sha - rasz A - ma - ro tra - jo - kecsa csi-



moj - hoj - ke - ras - la - sho ush - tyi - mo - o